

# THE ORIE

where anticipation meets aspirations



ALL INFORMATION ARE SUBJECTED TO FURTHER CHANGES WITHOUT PRIOR NOTICE

PLANS ARE NOT TO SCALE



DRAFT SITE PLAN

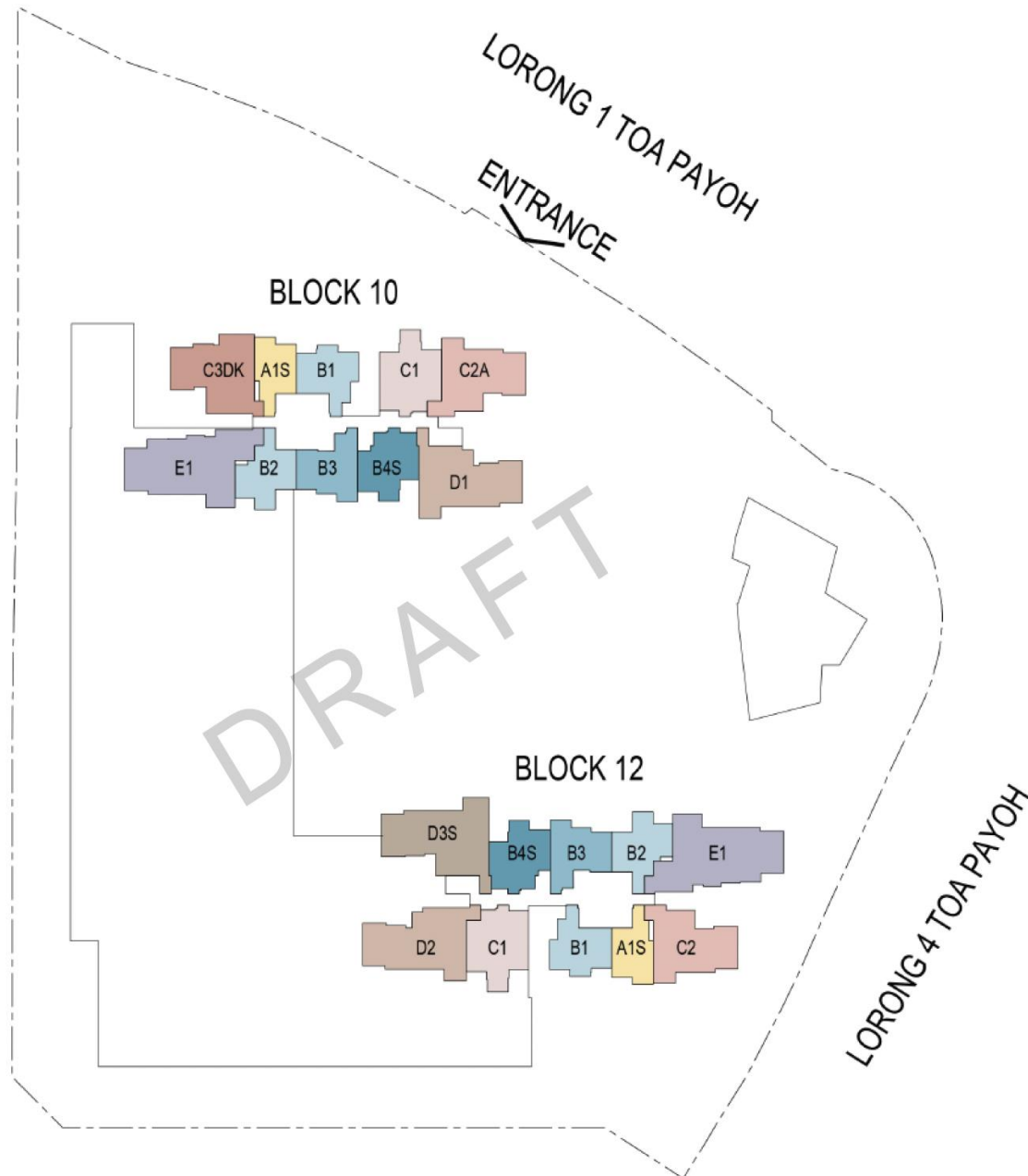
# the orie

## site plan

- A** Swimming
- B** Tennis Court
- C** BBQ & Pavillion
- D** Playground
- E** Substation & Bin Centre (Basement)
- F** Club House & Gym
- G** Multipurpose Rooms
- H** Outdoor Fitness
- I** Lush Landscaping
- Vehicular Ingress/Egress
- Pedestrian Side Gate
- Driveway
- 1st Storey Carpark
- 4 numbers Conserved

Disclaimer: The plans are subjected to amendments as may be required by the relevant authorities

# SCHEMATIC CHART

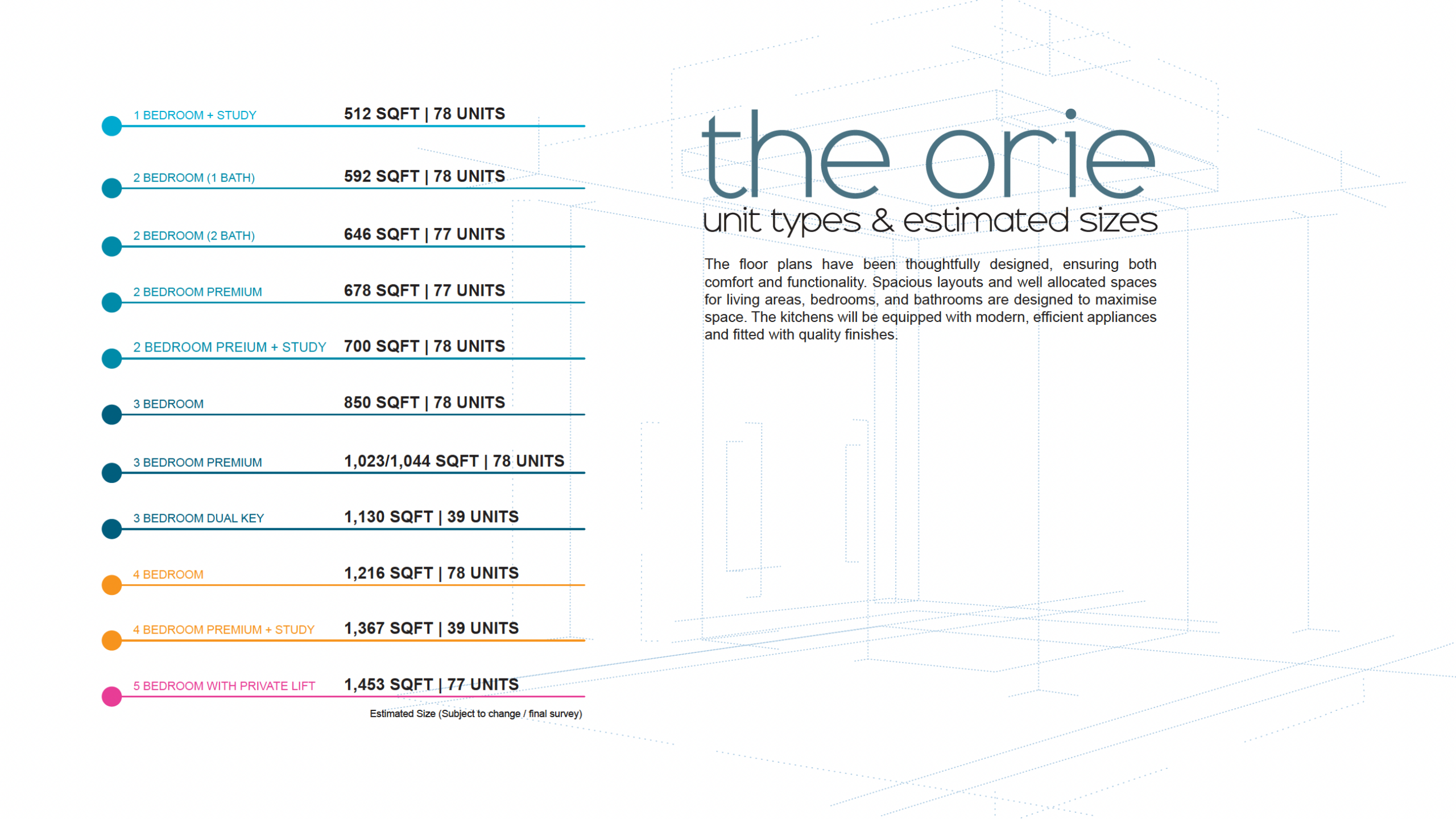


## LEGEND:

TYPE A1S	= 1 BEDROOM + STUDY
TYPE B1	= 2 BEDROOM (1 bath)
TYPE B2	= 2 BEDROOM (2 bath)
TYPE B3	= 2 BEDROOM PREMIUM
TYPE B4S	= 2 BEDROOM PREMIUM + STUDY
TYPE C1	= 3 BEDROOM
TYPE C2A	= 3 BEDROOM PREMIUM
TYPE C2	= 3 BEDROOM PREMIUM
TYPE C3DK	= 3 BEDROOM DUAL-KEY
TYPE D1	= 4 BEDROOM
TYPE D2	= 4 BEDROOM
TYPE D3S	= 4 BEDROOM PREMIUM + STUDY
TYPE E1	= 5 BEDROOM w PRIVATE LIFT

TYPE	No. of Units	No. of Stacks
	Proposed	Proposed
<b>A1S</b>	78	2
<b>B1</b>	78	2
<b>B2</b>	77	2
<b>B3</b>	77	2
<b>B4S</b>	78	2
<b>C1</b>	78	2
<b>C2A</b>	39	1
<b>C2</b>	39	1
<b>C3DK</b>	39	1
<b>D1</b>	39	1
<b>D2</b>	39	1
<b>D3S</b>	39	1
<b>E1</b>	77	2
<b>TOTAL</b>	<b>777</b>	<b>20</b>





1 BEDROOM + STUDY	512 SQFT   78 UNITS
2 BEDROOM (1 BATH)	592 SQFT   78 UNITS
2 BEDROOM (2 BATH)	646 SQFT   77 UNITS
2 BEDROOM PREMIUM	678 SQFT   77 UNITS
2 BEDROOM PREMIUM + STUDY	700 SQFT   78 UNITS
3 BEDROOM	850 SQFT   78 UNITS
3 BEDROOM PREMIUM	1,023/1,044 SQFT   78 UNITS
3 BEDROOM DUAL KEY	1,130 SQFT   39 UNITS
4 BEDROOM	1,216 SQFT   78 UNITS
4 BEDROOM PREMIUM + STUDY	1,367 SQFT   39 UNITS
5 BEDROOM WITH PRIVATE LIFT	1,453 SQFT   77 UNITS

Estimated Size (Subject to change / final survey)

# the orie

## unit types & estimated sizes

The floor plans have been thoughtfully designed, ensuring both comfort and functionality. Spacious layouts and well allocated spaces for living areas, bedrooms, and bathrooms are designed to maximise space. The kitchens will be equipped with modern, efficient appliances and fitted with quality finishes.





# the orie

## floor plans

**1 Bedroom + Study | A1S**  
48sqm | 517sqft



**2 Bedroom (1 Bath) | B1**  
55sqm | 592sqft



**2 Bedroom (2 Bath) | B2**  
60sqm | 646sqft



**2 Bedroom Premium + Study | B4S**  
65sqm | 700sqft

[SHOW UNIT](#)



**5 Bedroom (With Private Lift) | E1**  
135sqm | 1,453sqft

[SHOW UNIT](#)



**3 Bedroom | C2A**  
97sqm | 1,044sqft



**4 Bedroom | D2**  
113sqm | 1,216sqft

[SHOW UNIT](#)



**3 Bedroom Premium (Dual Key) | C3DK**  
105sqm | 1,130sqft



**4 Bedroom Premium + Study | D3S**  
127sqm | 1,367sqft



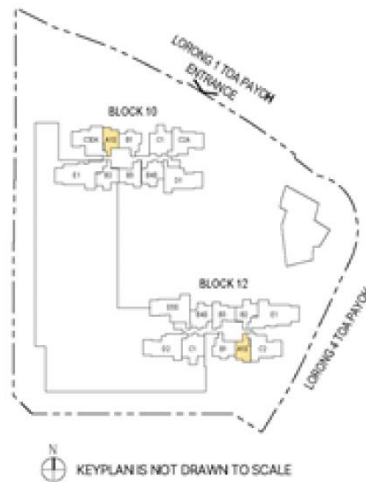
\*Disclaimer All plans are subjected to changes as may be approved by the relevant authorities. Floor area are approximately measurements and are subjected to government survey. \*Key Plans is Not Drawn To Scale

# 1 – BEDROOM + STUDY

## Type A1S

48sqm/517sqft  
(estimated area)

*Floor Plans and area are  
pending authorities' approval  
and subject to change*

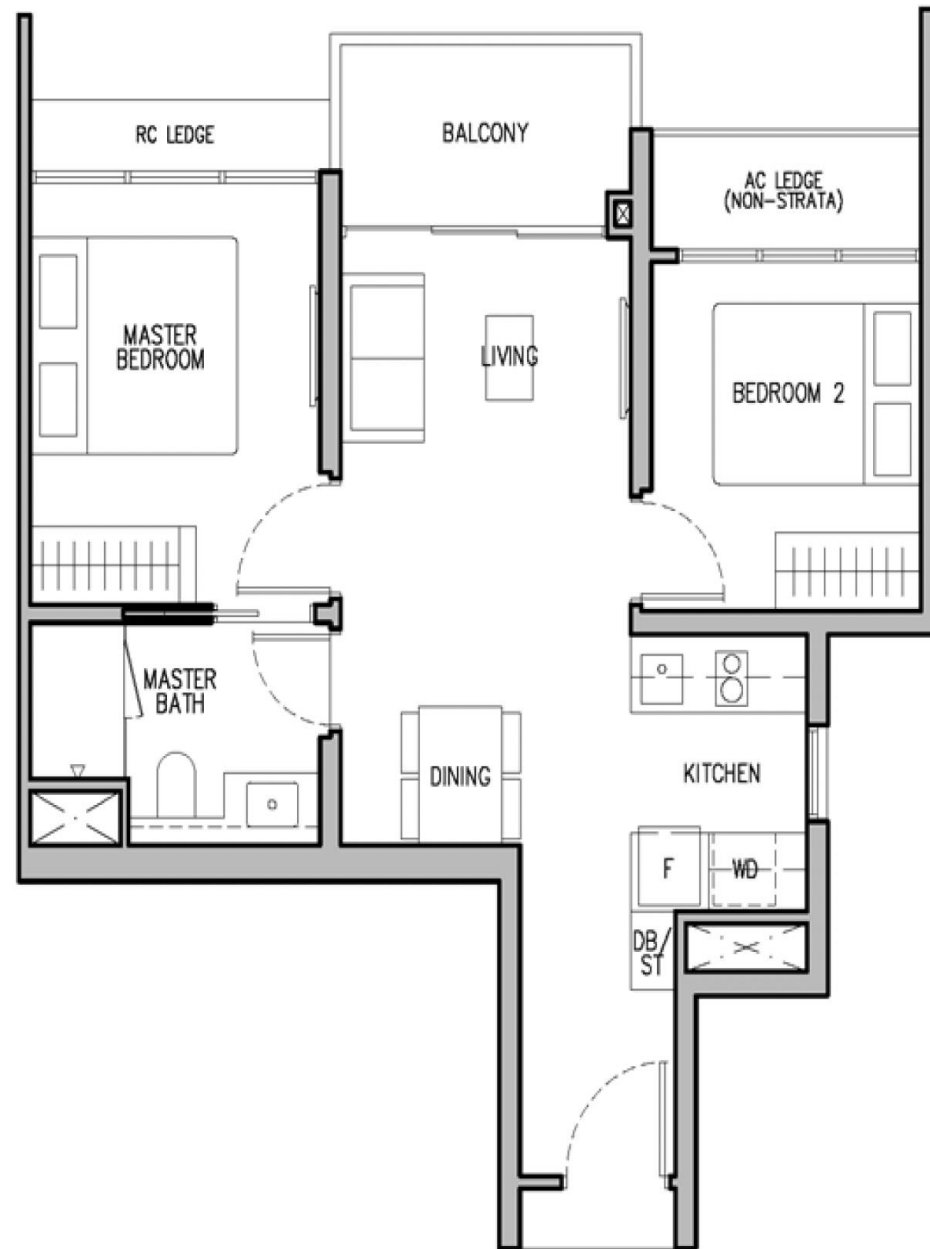
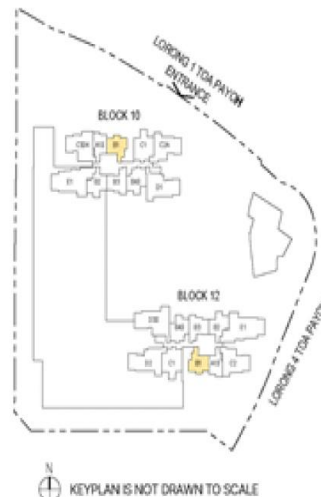


## 2 – BEDROOM (1 BATH)

### Type B1

55sqm/592sqft  
(estimated area)

*Floor Plans and area are  
pending authorities' approval  
and subject to change*



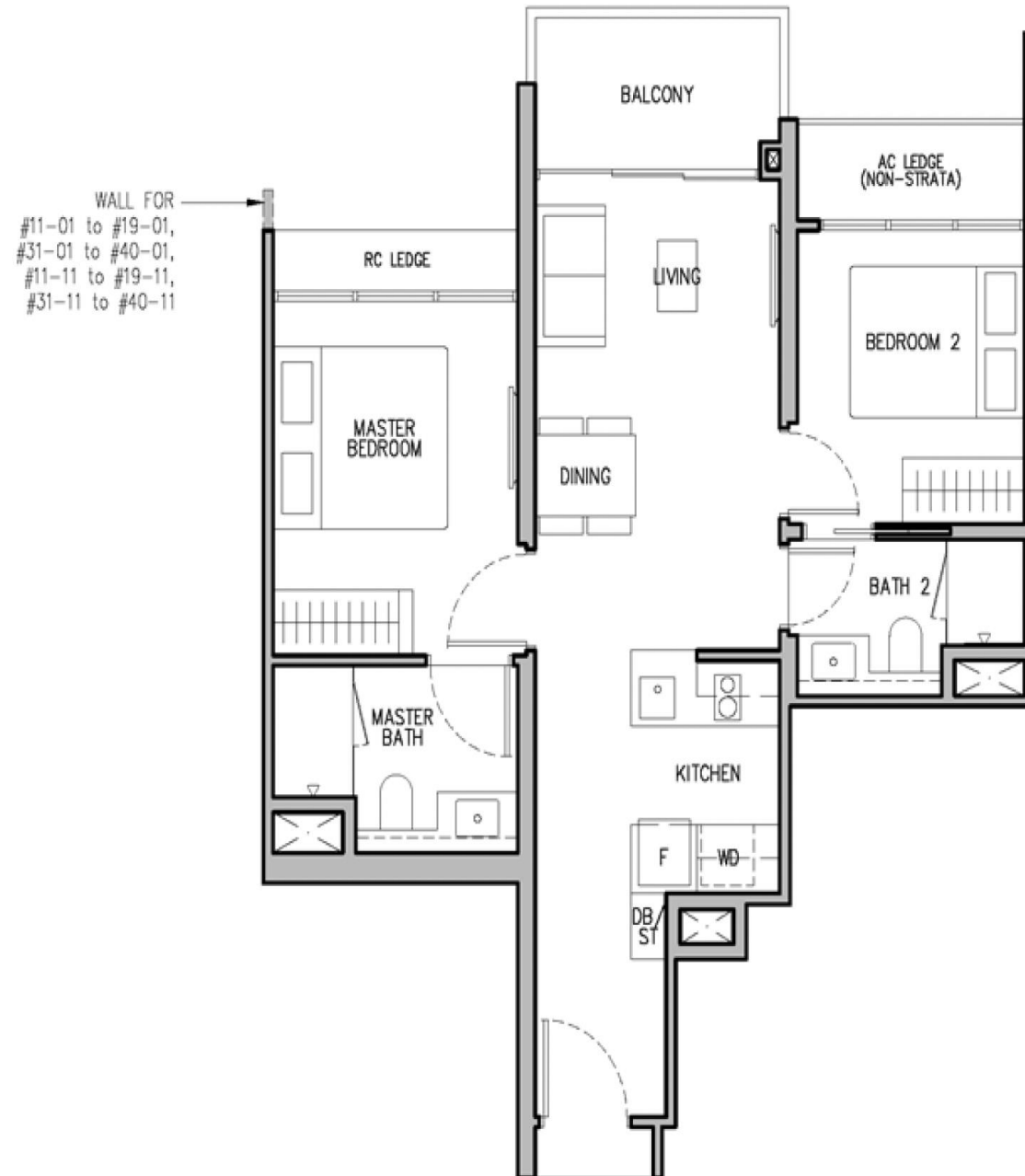
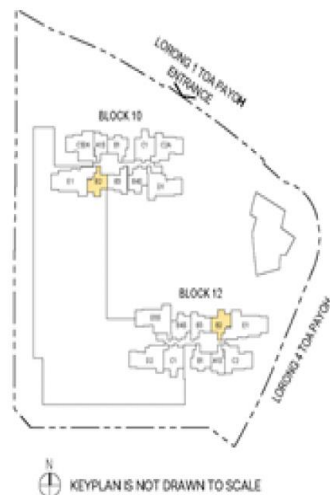


## 2 – BEDROOM (2 BATH)

### Type B2

60sqm/646sqft  
(estimated area)

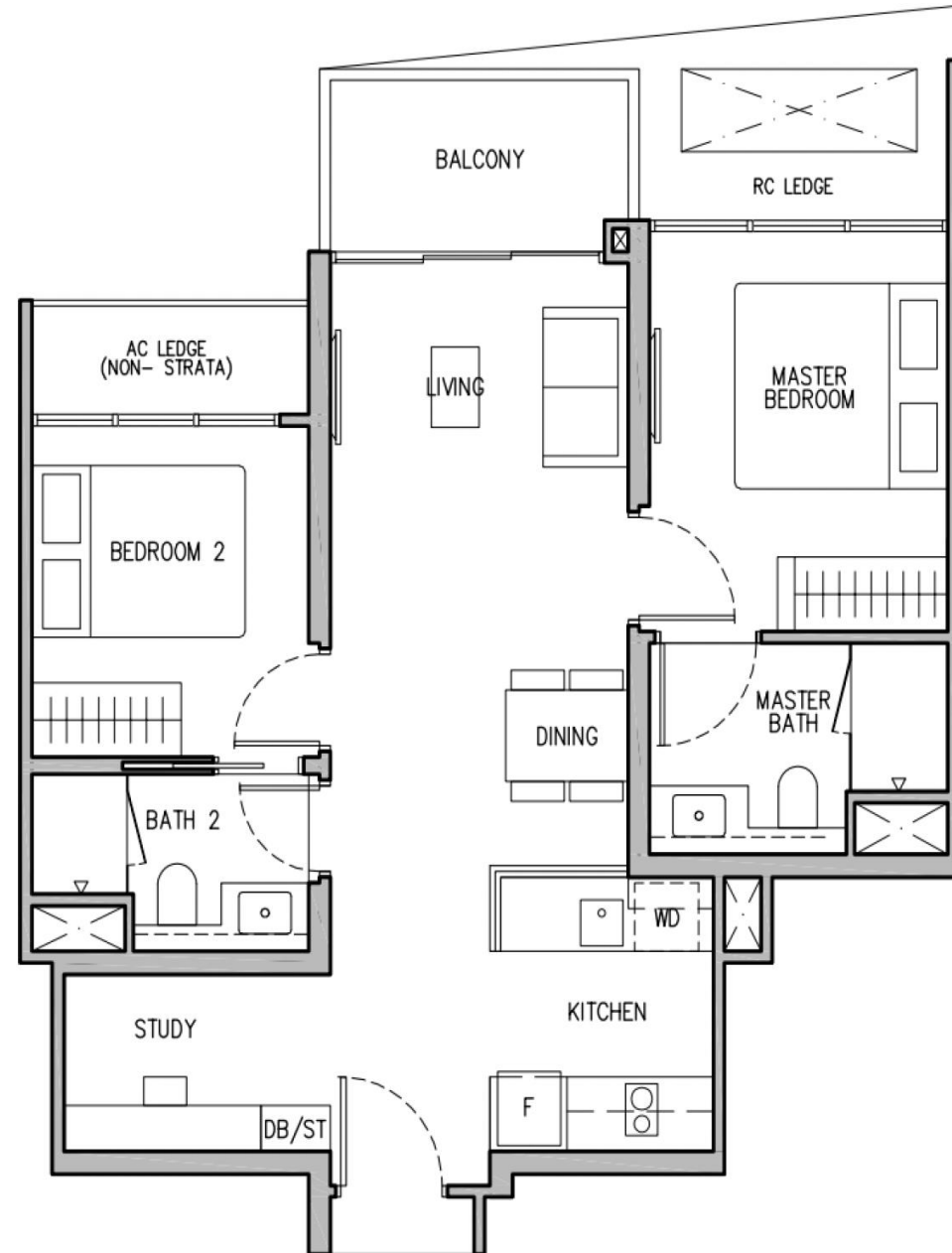
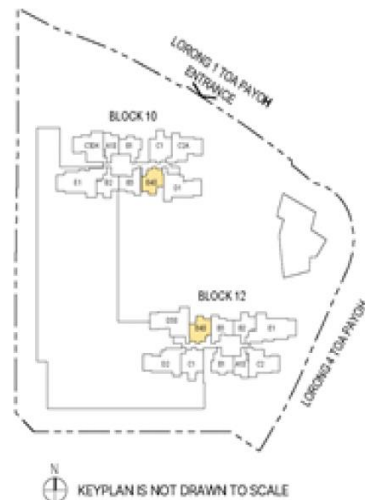
*Floor Plans and area are  
pending authorities' approval  
and subject to change*



### Type B4S

65sqm/700sqft  
(estimated area)

*Floor Plans and area are  
pending authorities' approval  
and subject to change*

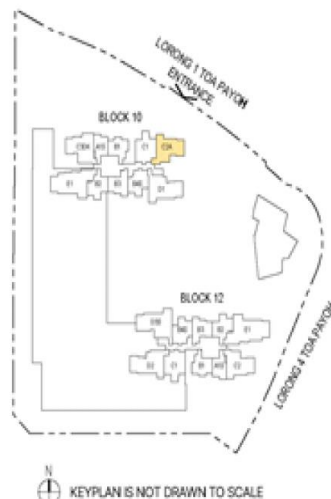


## 3 – BEDROOM PREMIUM

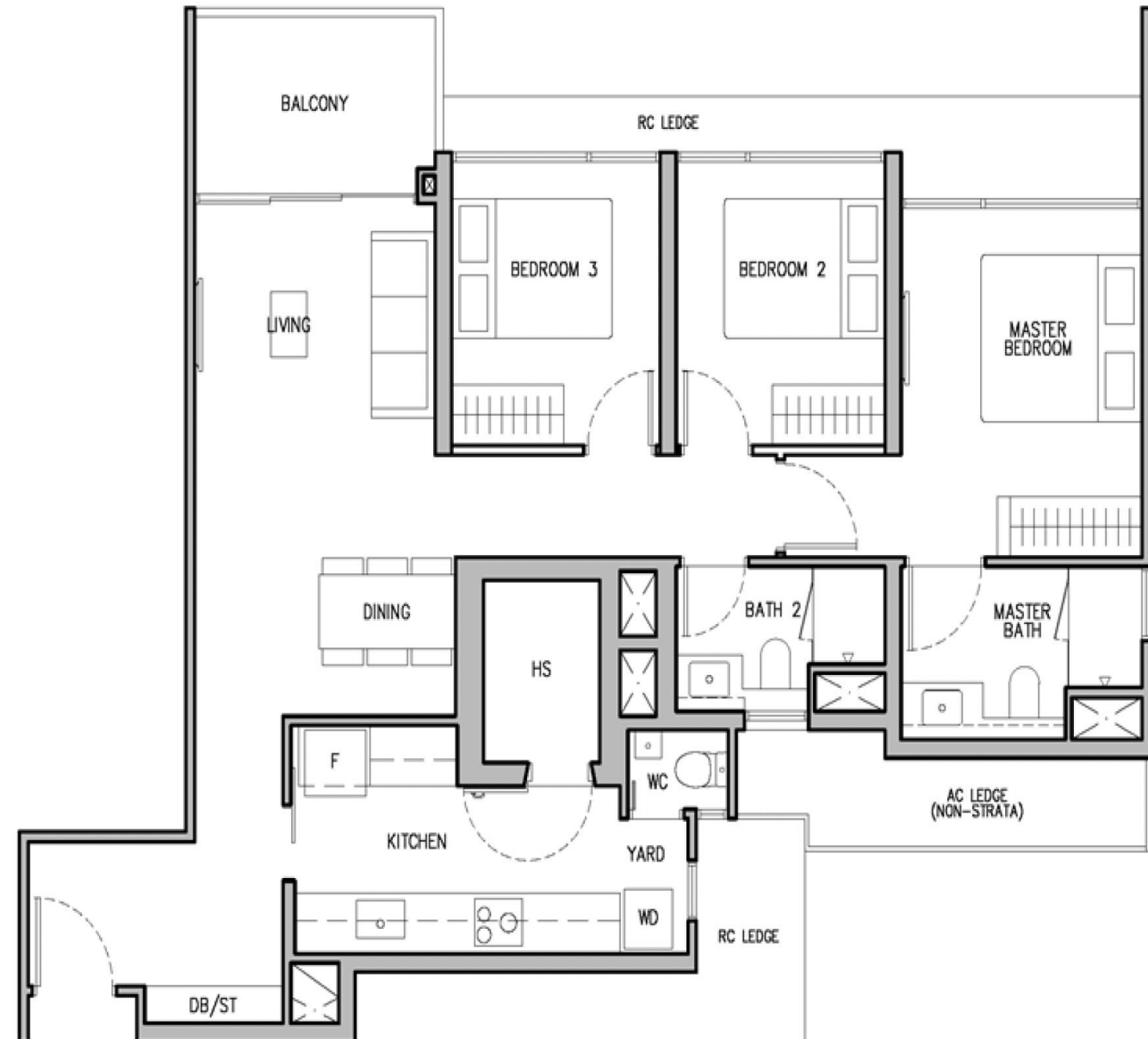
### Type C2A

97sqm/1044sqft  
(estimated area)

*Floor Plans and area are  
pending authorities' approval  
and subject to change*



N  
KEYPLAN IS NOT DRAWN TO SCALE



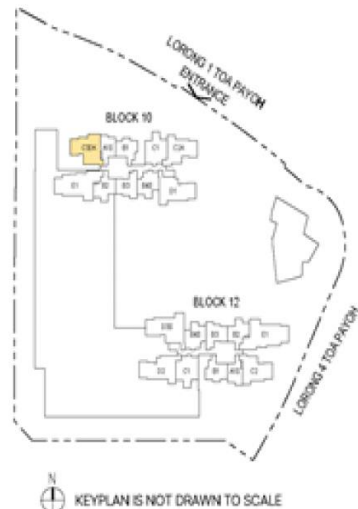


## 3 – BEDROOM PREMIUM DUAL-KEY

### Type C3DK

105sqm/1130sqft  
(estimated area)

*Floor Plans and area are  
pending authorities' approval  
and subject to change*

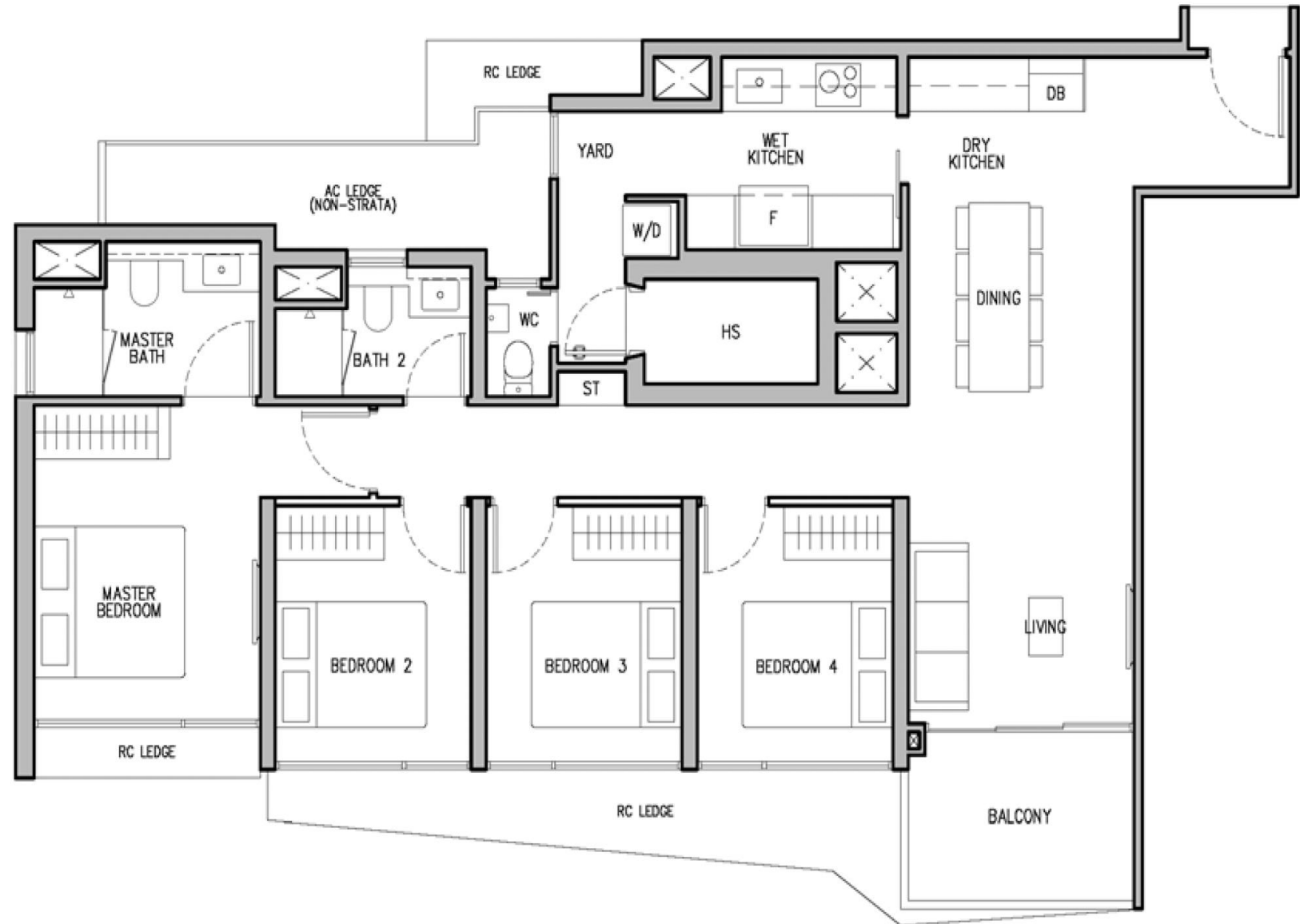


## 4 – BEDROOM

### Type D2

113sqm/1216sqft  
(estimated area)

*Floor Plans and area are  
pending authorities' approval  
and subject to change*

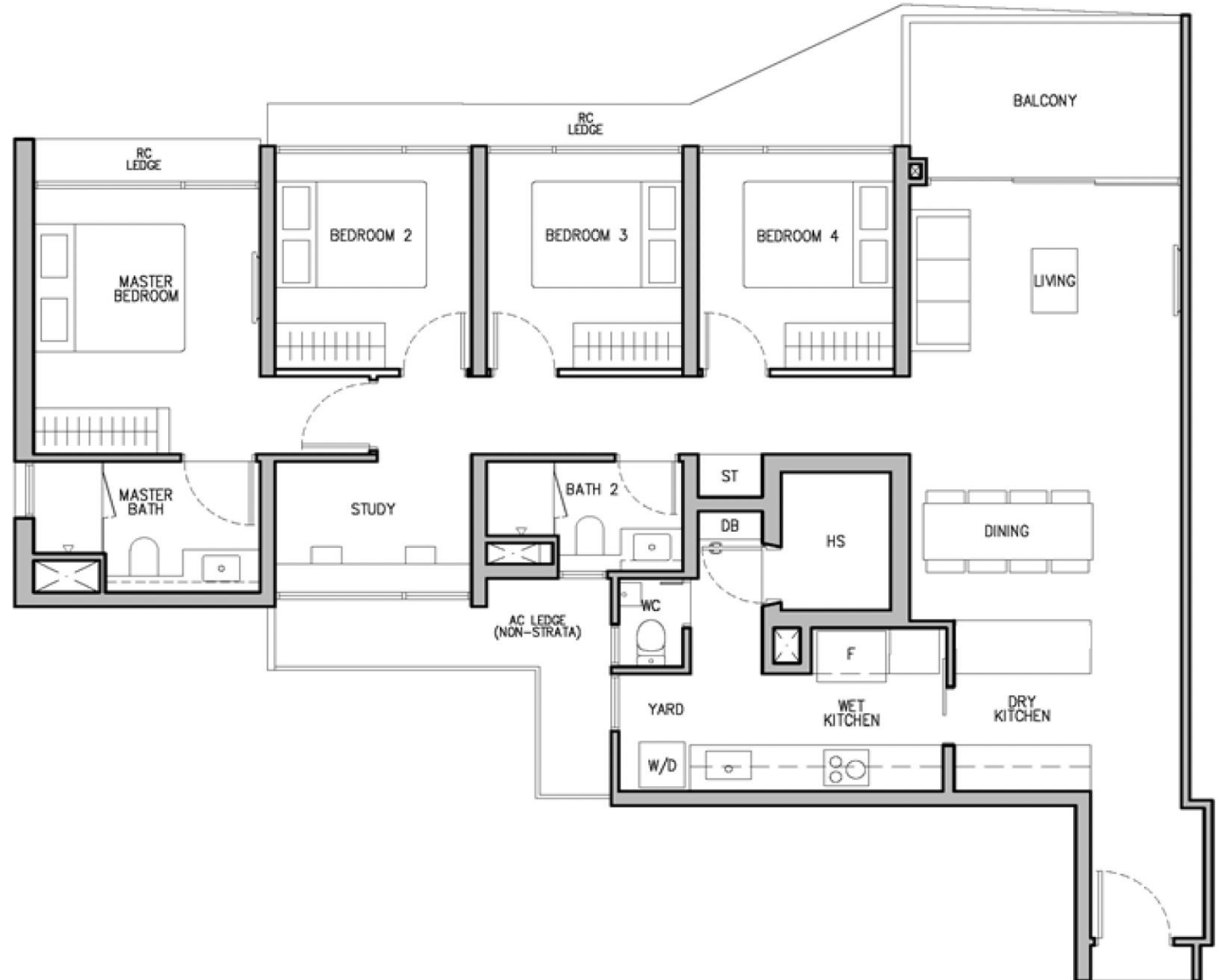


## 4 – BEDROOM PREMIUM + STUDY

### Type D3S

127sqm/1367sqft  
(estimated area)

*Floor Plans and area are  
pending authorities' approval  
and subject to change*



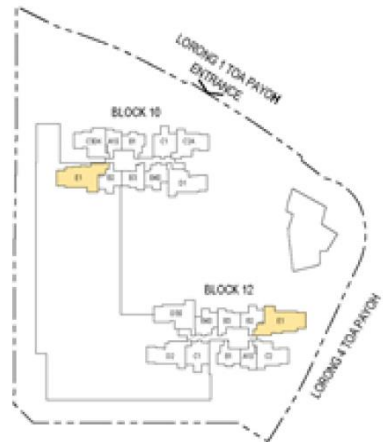


## 5 – BEDROOM (WITH PRIVATE LIFT )

### Type E1

135sqm/1453sqft  
(estimated area)

*Floor Plans and area are  
pending authorities' approval  
and subject to change*



N  
KEY PLAN IS NOT DRAWN TO SCALE



PLANS ARE NOT DRAWN TO

**CITY DEVELOPMENTS LIMITED (CDL)** is a leading global real estate company with a network spanning 112 locations in 29 countries and regions. Listed on the Singapore Exchange, the Group is one of the largest companies by market capitalization. Its income-stable and geographically-diverse portfolio comprises residences, offices, hotels, serviced apartments, shopping malls and integrated developments.

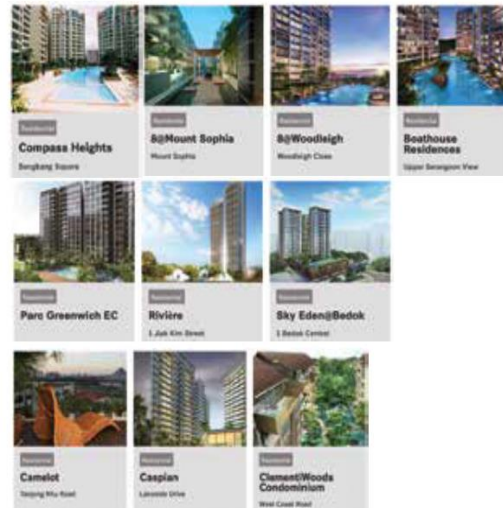
With a proven track record of over 55 years in real estate development, investment and management, the Group has developed over 47,000 homes and owns over 23 million square feet of gross floor area in residential, commercial and hospitality assets globally. Its diversified global land bank offers 3.5 million square feet of land area.

[www.cdihomes.com.sg](http://www.cdihomes.com.sg)



**FRASERS PROPERTY SINGAPORE** is a strategic business unit of SGX-listed Frasers Property Limited, a multinational company that owns, develops, and manages a diverse and integrated property portfolio. Frasers Property Singapore owns, develops and/or manages residential, retail, office and business space properties in Singapore. Over the years, it has developed over 22,000 quality homes. It oversees a portfolio of 12 shopping malls in Singapore and six office and business space properties. Nine of the retail assets and one office property is held under Frasers Centrepoint Trust, and another office property is held under Frasers Logistics & Commercial Trust.

[www.frasersproperty.com](http://www.frasersproperty.com)



# the orie

## developer's profile

**SEKISUI HOUSE** - Partnering with local developers to develop housing with high added value that corresponds with the lifestyle of the area. Sekisui House is committed to developing sustainable communities, such as One Holland Village, a large-scale housing and commercial complex that is attracting much attention. The company works with local partners to adapt its concept and design of housing and community development to local lifestyles, to deliver development projects with high added value.

[www.sekisuihouse-global.com](http://www.sekisuihouse-global.com)

